

N210

Sizes 2" – 24"



Description

This heavy-duty globe valve complies with API and BS standards. The seat ring and wedge disc are precision-ground and lapped to achieve mirror-like finishes, ensuring optimal sealing surfaces. A plug-type disc is standard, with flat and regulating discs available upon request.

The heat-treated stainless steel stem features precision-machined ACME threads for extended service life. A machined backseat bushing provides a secondary metal-to-metal stem seal. The rising stem clearly indicates the valve's open/closed position, and the large-diameter handwheel allows for easy operation.

The yoke sleeve is constructed from austenitic ductile iron, offering excellent resistance to heat, corrosion, and wear. A two-piece, self-aligning gland bushing and gland flange prevent damage, reinforced by high-strength alloy steel stud bolts.

Design: API 600

Shell Thickness: API 600

Flanged Ends: ANSI B16.5

Face to Face: ANSI B16.10

Testung: API 598

Globe Valve API 600 ANSI Class 150-2500

- **Globe Valve API 600 ANSI Class 150 to 2500**
- **Single and Double Disc**
- **Bolted bonnet and Union Bonnet**
- **Outside Screw and Yoke, Rising stem**
- **Hand and Gear Wheel Operated (Actuation Available)**
- **Plug, Flat and Regulating Disc Available**
- **Body: Cast and forging form**



Beschreibung

Konstruiert nach API 600 und druckgeprüft gemäß API 598/EN 12266-1, bietet dieses robuste Flansch-Absperrventil hervorragende Langlebigkeit für anspruchsvolle industrielle Anwendungen, Kesselanlagen und raue Umgebungen. Das Ventil ist mit ANSI 150 Flanschen erhältlich und gewährleistet durch ein robustes Handrad eine maximale Lebensdauer.



Description

Designed to API 600 and pressure tested according to API 598/EN 12266-1, this robust flanged gate valve offers exceptional durability for demanding industrial applications, boiler systems, and harsh environments. Available with ANSI 150 flanges, the valve ensures maximum service life through a sturdy handwheel.

For information please contact us:
info@newcomen.de
(+49) 21511528392

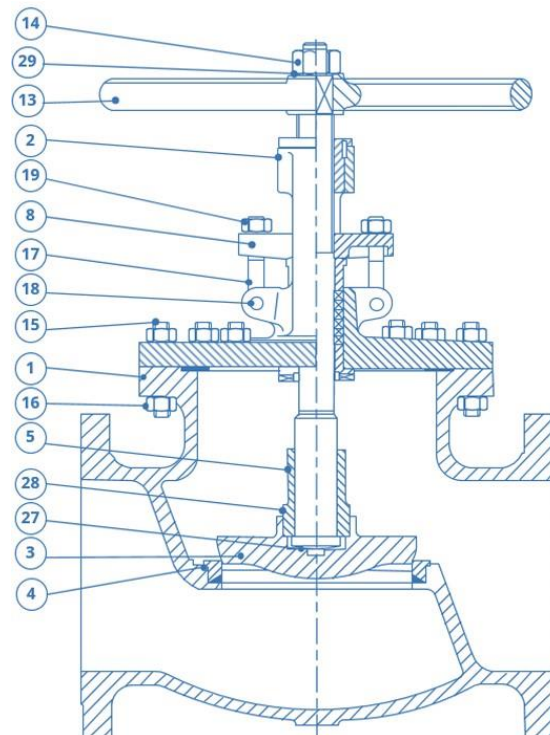
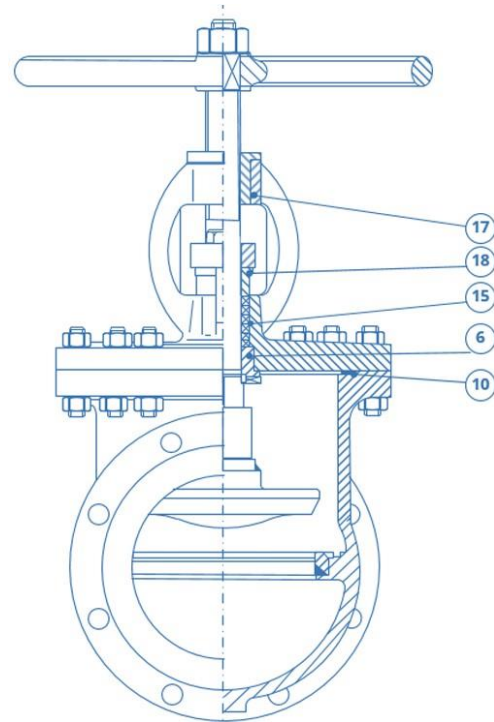
Globe Valve API 600 ANSI Class 150-2500

N.E.V

Newcomen Engineering Valve

- Globe Valve API 600 ANSI Class 150 to 2500
- Bolted bonnet and Union Bonnet
- Outside Screw and Yoke, Rising stem
- Hand and Gear Wheel Operated (Actuation Available)
- Plug, Flat and Regulating disc Available
- Body: cast and forging form

Description of Parts	
1	Body
2	Bonnet
3	Disc
4	Seat Ring
5	Stem
6	Backseat Bushing
7	Gland Bushing
8	Gland Flange
9	Packing
10	Gasket
11	Yoke Bushing
13	Hand wheel
14	Hand wheel Nut
15/16	Stud Bolt / Hex Nut
17	Eyebolt
18	Pin
19	Hex Nut
27/28	Disc Washer Nut
29	Washer



Material Structure

Part	ANSI B16.34				
	Carbon Steel	Carbon-Manganese steel	Alloy Steel		
Body / Bonnet	A216 WCB	A352 LCC	A217 WC6	A217 WC9	A217 C5
Gland Bushing	13% Chromium ASTM A182 Gr.F6a				
Stud Bolt & Hex Nuts	B7 / 2H	L7/7	ASTM A193 Gr B16		
Yoke/Gland Flange	Carbon Steel				
Yoke Bushing	ASTM A439 Type D2				
Hand wheel	Cast Iron				
Hand Wheel Nut	Carbon Steel				
Gland Eyebolts & Nut	ASTM A307 Gr.B				

Part	Corrosion Resistant Steel				
Body / Bonnet	A351 CF8	A351 CF3	A351 CF8M	A351 CF3M	A351 CN7M
Gland Bushing	304 SS	304 SS	316 SS	316L SS	Alloy 20
Stud Bolt & Hex Nuts	ASTM 193 Gr.B8 / ASTM A194 Gr.8				
Yoke/Gland Flange	ASTM 193 Gr.B8				
Yoke Bushing	ASTM A439 Type D2				
Hand wheel	Cast Iron				
Hand Wheel Nut	Carbon Steel				
Gland Eyebolts & Nut	ASTM A193 Gr.B8				

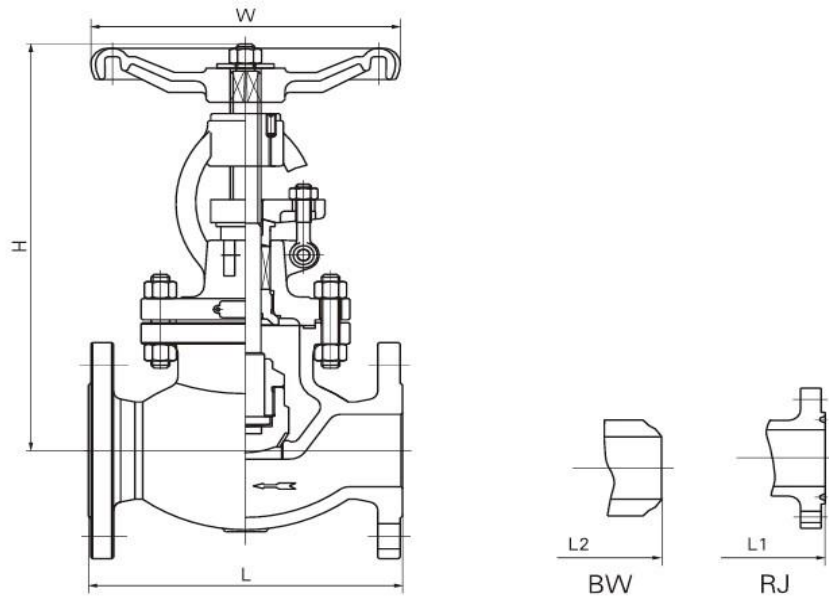
Trim Material

Part	API Trim Number										
	1	2	5	8	9	10	11	12	13	14	15
Disc	F6	304SS	HF	F6	Ni-CU	316SS	Ni-CU	316SS	Alloy 20	Alloy 20	HF
Seat Ring	F6	304SS	HF	HF	Ni-CU	316SS	HF	HF	Alloy 20	HF	HF
Stem	F6	304SS	F6	F6	Ni-CU	316SS	Ni-CU	316SS	Alloy 20	Alloy 20	304SS
Backseat	F6	304SS	F6	F6	Ni-CU	316SS	Ni-CU	316SS	Alloy 20	Alloy 20	304SS
Washer / Nut	F6	304SS	F6	F6	Ni-CU	316SS	Ni-CU	316SS	Alloy 20	Alloy 20	304SS

Globe Valve API 600 ANSI Class 150-2500

N.E.V

Newcomen Engineering Valve



Globe Valve 150 LBS

Part	2	4	6	8	10	12	14	16	18	20	24
L	203	292	406	495	622	698	787	914	978	978	1295
L1	216	305	419	508	635	711	800	927	991	991	1308
L2	203	292	406	495	622	698	787	914	978	978	1295
H	350	490	537	707	788	820	898	930	980	1028	1134
W	220	320	400	450	560	580	-	-	-	-	-
Weight	22	60	97	161	308	410	-	-	-	-	-
H (Gear.W)	-	-	-	735	818	851	930	963	1013	1063	1170
W (Gear.W)	-	-	-	400	510	550	600	650	700	750	800
Weight (Gear)	-	-	-	200	390	510	650	1000	1500	1800	2200

Note: Figures are based on millimeters and kilograms

Note: The size and weight of the valves can vary depending on the gear wheel used

- Gear wheel: For 8,10 and 12 inches is Recommended
- Gear wheel: For 14 inches and above is required

Globe Valve 300 LBS

Part	2	4	6	8	10	12	14	16	18	20	24
L: mm	267	356	445	559	622	711	838	864	978	1016	1346
L1:mm	283	372	461	575	638	727	854	880	994	1035	1368
L2:mm	267	354	445	559	622	711	828	864	978	1016	1346
H:mm	345	468	708	800	1040	1140	1250	1295	1340	1385	1475
W:mm	220	320	450	500	-	-	-	-	-	-	-
Weight	28	75	200	287	-	-	-	-	-	-	-
H (Gear.W)	-	-	753	847	1090	1192	1305	1350	1400	1450	1540
W (Gear.W)	-	-	400	450	550	600	640	690	740	790	840
Weight (Gear)	-	-	250	342	546	750	840	950	1100	1230	1350

Note: Figures are based on millimeters and kilograms

Note: The size and weight of the valves with Gear Wheel can vary depending on the gear wheel type

- Gear wheel: For 6 and 8 inches is Recommended
- Gear wheel: For 10 inches and above is required
- Actuator or Motor: For 10 inches is Recommended
- Actuator or Motor: above 12 inches is required

Globe Valve 600 LBS

Part	2	4	6	8	10	12	14	16
L: mm	292	432	559	660	787	838	889	991
L1:mm	295	435	562	663	790	841	892	994
L2:mm	292	432	559	660	787	838	889	991
H:mm	385	685	901	913	1060	1227	1320	1540
W:mm	285	400	550	-	-	-	-	-
Weight	32	139	342	-	-	-	-	-
H (Gear.W)	-	725	946	958	1107	1277	1370	1590
W (Gear.W)	-	350	450	500	550	600	640	690
Weight (Gear)	-	164	530	750	860	980	1100	1250

Note: Figures are based on millimeters and kilograms

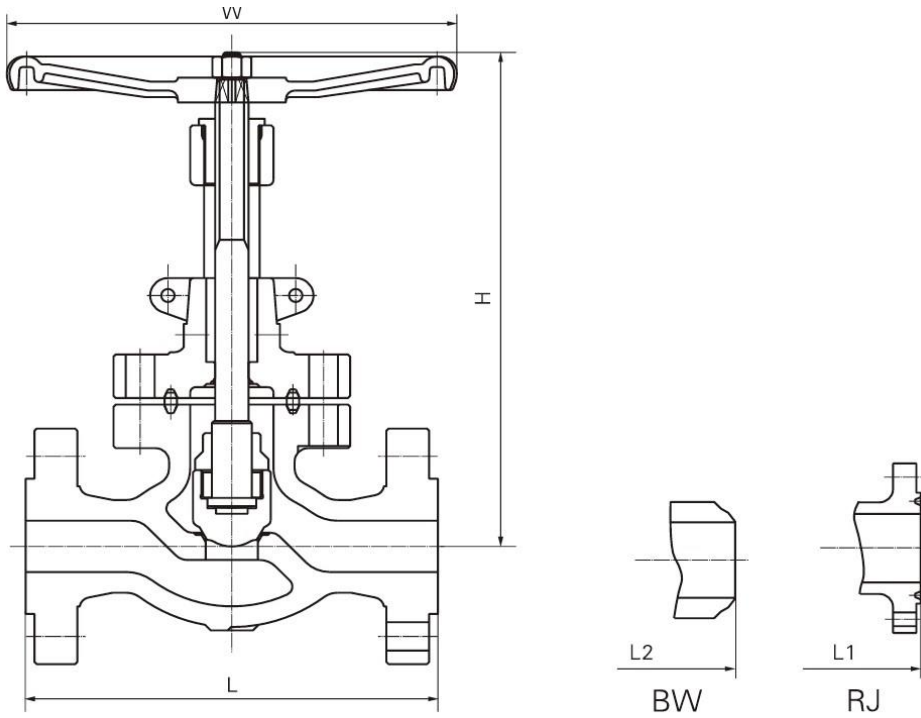
Note: The size and weight of the valves with Gear Wheel can vary depending on the gear wheel type

- Gear wheel: For 4 inches is Recommended
- Gear wheel: For 6 inches and above is required
- Actuator or Motor: For 8 inches is Recommended
- Actuator or Motor: above 10 inches is required

Globe Valve API 600 ANSI Class 150-2500

N.E.V

Newcomen Engineering Valve



Globe Valve 900 LBS

Part	2	4	6	8	10	12	14	16
L: mm	368	457	610	737	838	965	1029	1130
L1: mm	371	460	613	740	841	968	1039	1140
L2: mm	368	457	610	737	838	965	1029	1130
H: mm	430	780	870	980	1010	1300	1400	1600
W: mm	320	500	850	-	-	-	-	-
Weight	58	225	-	-	-	-	-	-
H (Gear.W)	-	825	917	1030	1060	1355	1465	1675
W (Gear.W)	.	290	350	400	440	490	520	560
Weight (Gear)	-	250	550	640	750	900	1150	1300

Note: Figures are based on millimeters and kilograms

Note: The size and weight of the valves with Gear Wheel can vary depending on the gear wheel type

- Gear wheel: For 4 inches is Recommended
- Gear wheel: For 6 inches and above is required
- Actuator or Motor: For 8 inches is Recommended
- Actuator or Motor: above 10 inches is required

Globe Valve 1500 LBS

Part	2	4	6	8	10	12	14
L: mm	368	546	705	832	991	1130	1257
L1:mm	371	549	711	842	1001	1146	1276
L2:mm	368	546	705	832	991	1130	1257
H:mm	430	820	910	1015	1035	1350	1460
W:mm	320	400	700	-	-	-	-
Weight	66	292	620	808	-	-	-
H (Gear.W)	470	865	957	1065	1085	1410	1525
W (Gear.W)	290	370	650	710	750	790	840
Weight (Gear)	85	340	670	865	1100	1350	1600

Note: Figures are based on millimeters and kilograms

Note: The size and weight of the valves with Gear Wheel can vary depending on the gear wheel type

- Gear wheel: For 2 inches is Recommended
- Gear wheel: For 4 inches and above is required
- Actuator or Motor: For 6 inches is Recommended
- Actuator or Motor: above 8 inches is required

Globe Valve 2500 LBS

Part	2	4	6	8	10	12
L: mm	451	673	914	1022	1270	1422
L1:mm	454	683	927	1038	1292	1444
L2:mm	279	457	610	762	914	1041
H:mm	495	685	971	1200	1416	1524
W:mm	406	406	-	-	-	-
Weight	117	260	770	1238	-	-
H (Gear.W)	535	730	1019	1250	1471	1584
W (Gear.W)	350	400	440	490	540	590
Weight (Gear)	167	295	500	720	950	1170

Note: Figures are based on millimeters and kilograms

Note: The size and weight of the valves with Gear Wheel can vary depending on the gear wheel type

- Gear wheel: For 2 inches and above is required
- Actuator or Motor: For 6 inches is Recommended
- Actuator or Motor: above 8 inches is required